








Raupenkran/Crawler Crane

LR 1800-1.0

Vorläufig
Preliminary

Neuheit/New



	800 t
	180 m
	102 m + 102 m
	230 t
	70 t
	400 t
	9 m



LIEBHERR

Highlights Highlights

Herausragende Traglast Outstanding capacity

Drei Systemmaße H-S-L Wirtschaftlicher Transport

Three system dimensions H-S-L Transport worldwide

Transportoptimiert

Max. Transportgewicht < 45 t
Zwischenstück-Pakete H-S-L
Transportbreite Grundmaschine 3 m

Optimised for transport

Max. transport weight < 45 t
Intermediate section packages H-S-L
Transport width basic machine 3 m

Optimiertes Raupenmittelteil

Quick Connection
Abnehmbare Mittelteilabstützung

Optimised crawler centre part

Quick Connection
Removable centre support

Optimiertes Fahrwerk

Standardbodenplatten 2 m
4-fach Antrieb

Optimised chassis

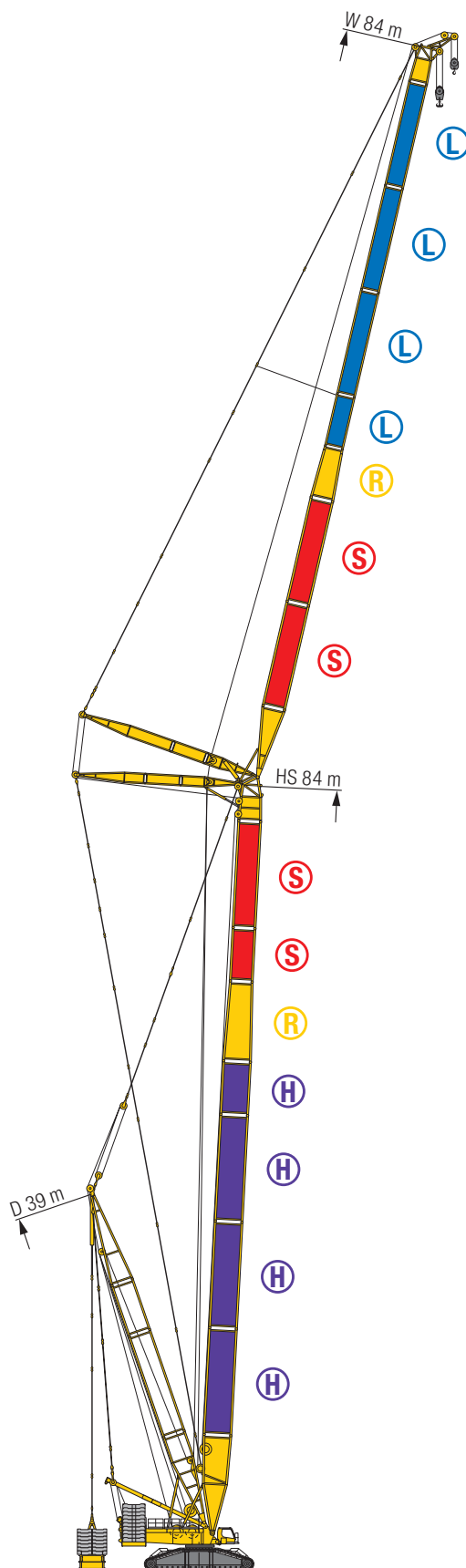
Standard ground plates 2 m
4-fold drive

Ballastsystem

Derrickballast 400 t
Betrieb mit Ballastpalette
Derrickballastradius: 12 – 18 m, 14 – 23 m
Betrieb mit Ballastwagen
Derrickballastradius: 14 – 19 m, 18 – 23 m

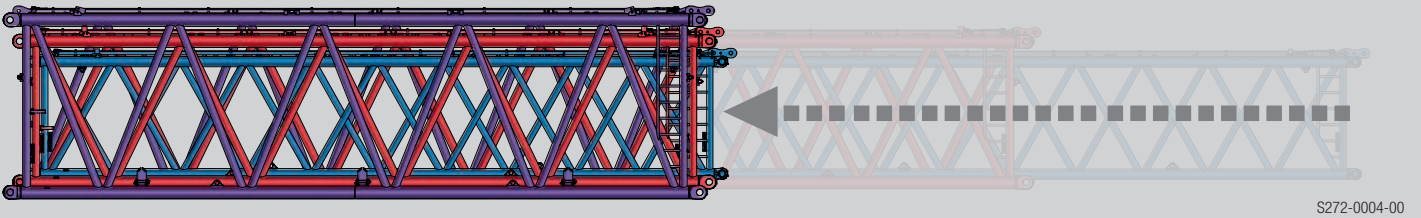
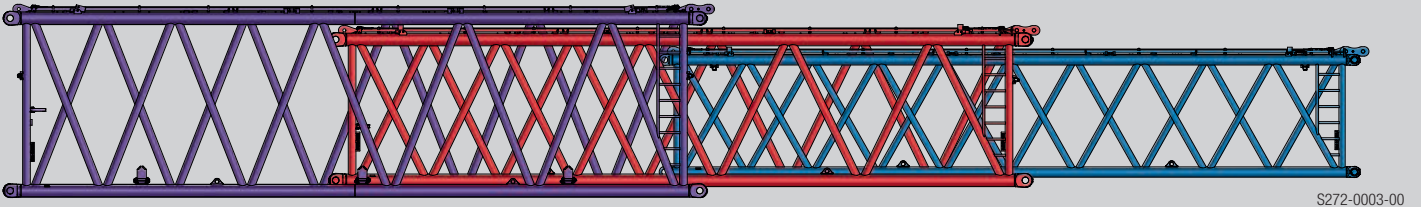
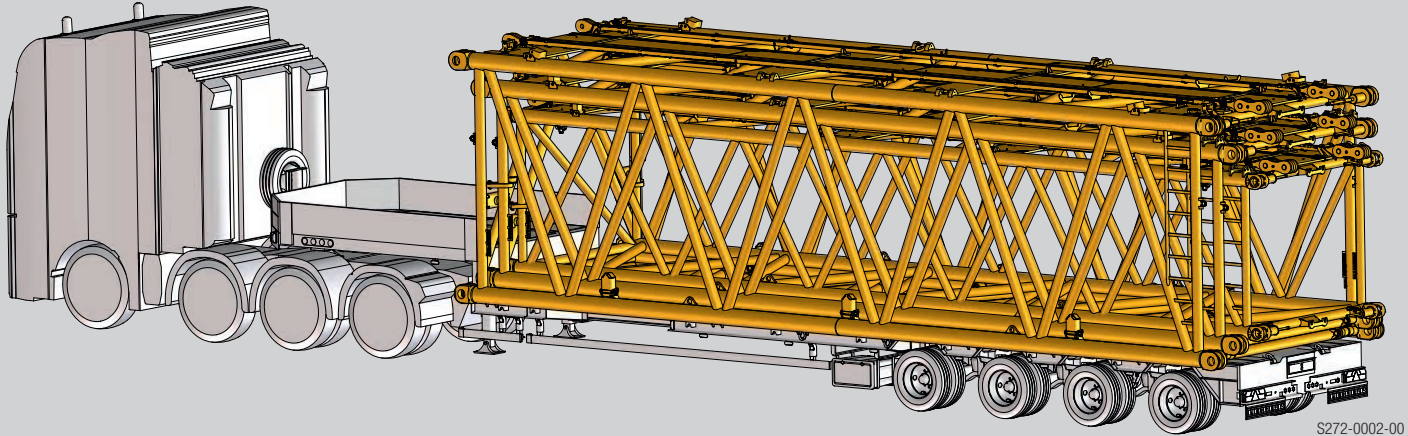
Ballast system

Derrick-Counterweight 400 t
Operation with ballast tray
Radius Derrick-Counterweight: 12 – 18 m, 14 – 23 m
Operation with counterweight trailer
Radius Derrick-Counterweight: 14 – 19 m, 18 – 23 m

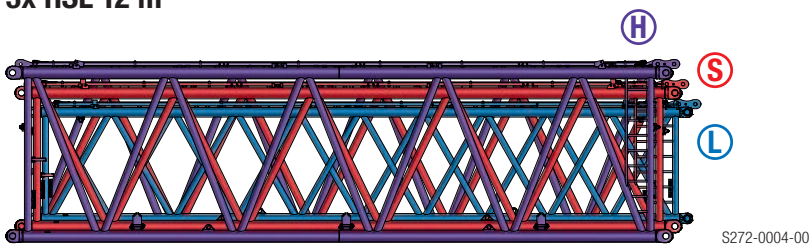


S3185

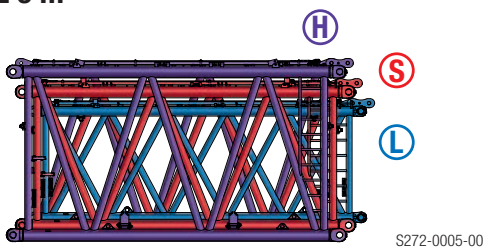
Weltweit wirtschaftlicher Transport Economic transport worldwide



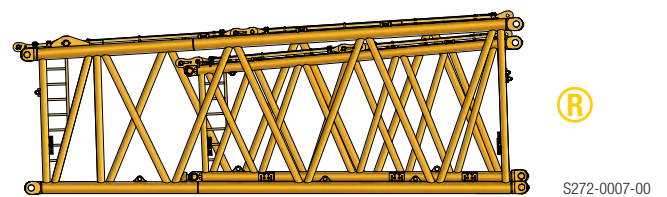
3x HSL 12 m



HSL 6 m

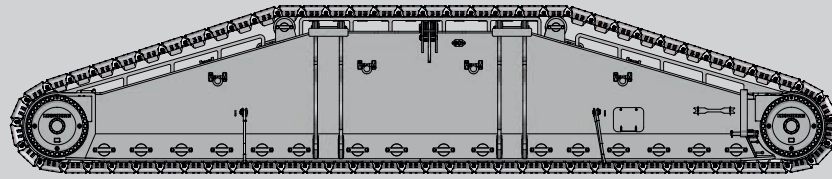


HS-Reduzierstück inkl. SL-Reduzierstück
HS-reduction section incl. SL-reduction section



Transport Transportation

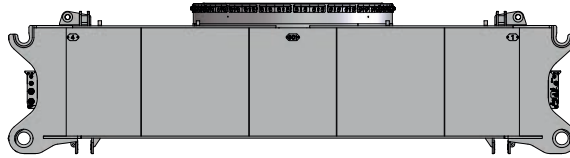
Raupenträger mit 2 m Bodenplatten
Crawler with 2 m crawler shoes



S272-0012-00

60 t

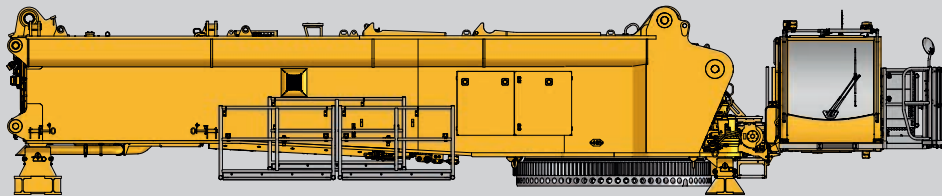
Raupenmittelteil
Crawler middle section



S272-0013-00

30 t

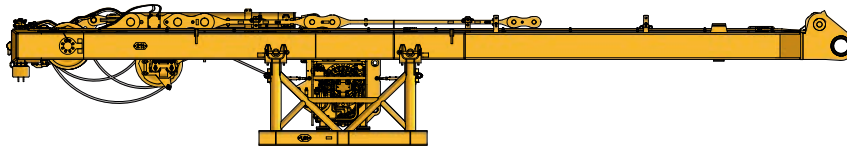
Transporteinheit
Drehbühne
Transport unit
superstructure



S272-0014-00

46 t

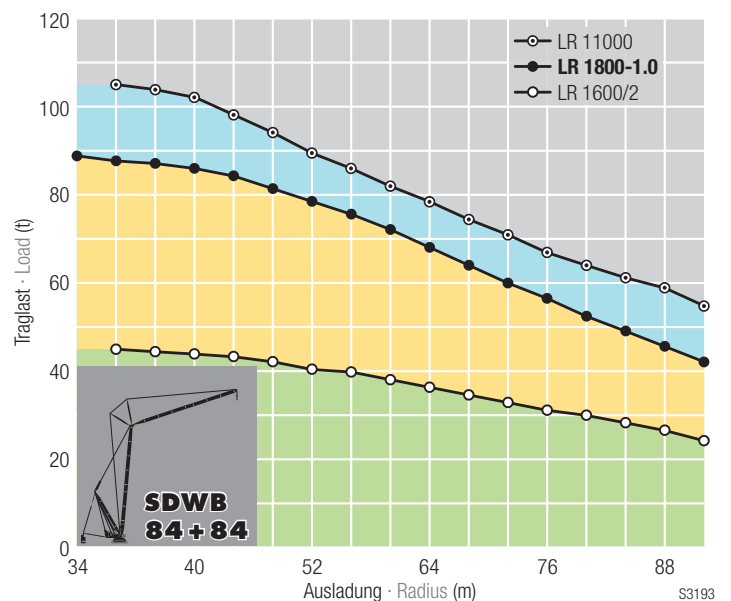
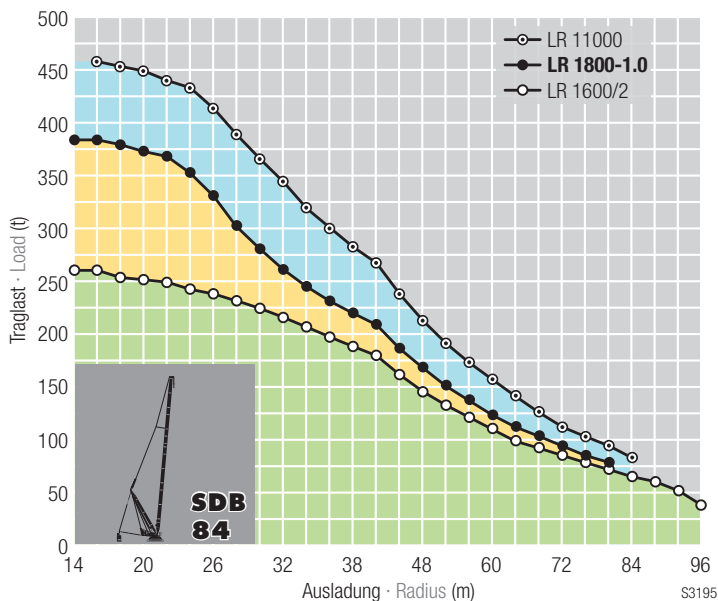
SA-Bock
SA-frame



S272-0015-00

23 t

Hohe Tragkräfte / High capacities



Änderungen vorbehalten / Subject to modification