

Mobil- und Raupenkrane

Mobile and Crawler Cranes

Grues mobiles et sur chenilles

2004



LIEBHERR

Mobilkrane • Mobile cranes • Grues mobiles automotrices

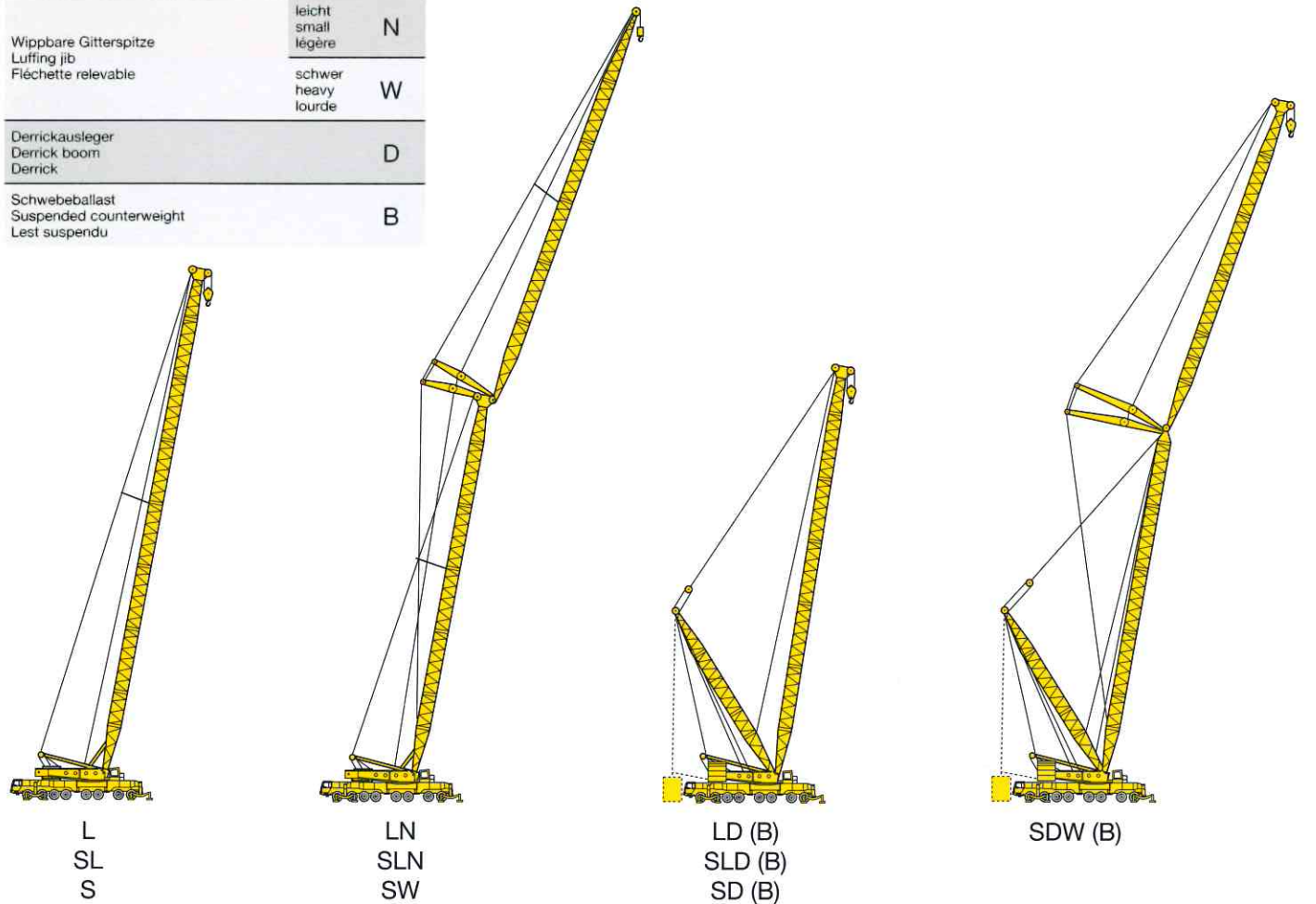
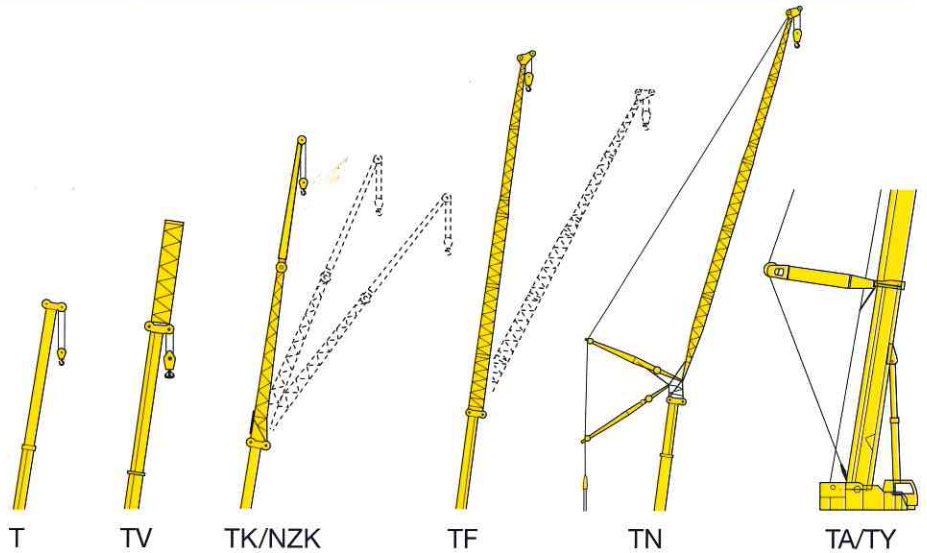


	t	m								kW/PS	max	max	Stand./Option	
LTM 1030-2.1	35	3	205 278	80	60	4 x 4 x 4	-	9,2-30	8,6-15	45 (30)	2,8 (8,3)	40 (26)	0,5 (1,4)	T, TK
LTM 1045-3.1	45	3	270 367	80	60	6 x 4 x 6 6 x 6 x 6	-	10,3-34	9,2-16	50 (34)	2,6 (10)	40 (30)	0,8 (1,5)	T, TK
LTM 1055-3.1	55	2,5	270 367	80	60	6 x 4 x 6 6 x 6 x 6	-	10,2-40	9,5-16	56 (40)	3,1 (10,1)	48 (36)	0,6 (1,5)	T, TK
LTM 1060/2	60	2,5	270 367	80	60	8 x 4 x 8 8 x 6 x 8	-	10,9-42	9,5-17	60 (42)	3,5 (10,1)	48 (38)	0,7 (1,5)	T, TK
LTM 1090-4.1	90	2,5	338 460	80	60	8 x 6 x 8 8 x 8 x 8	149 202	11,1-50 57*	10,5-19	76 (50)	1,8 (9)	62 (46)	0,6 (1,5)	T, TK, TVK
LTM 1100-4.1	100	2,5	338 460	80	71	8 x 6 x 8 8 x 8 x 8	149 202	11,5-52 66*	10,8-19	84 (52)	1,1 (10,7)	58 (48)	0,8 (1,1)	T, TK, TNZK TVK, TVNZK
LTM 1100-5.1	100	2,7	400 544	80	60	10 x 6 x 8 10 x 8 x 8	149 202	11,5-52 66*	10,8-19	84 (52)	1,8 (11,4)	66 (48)	0,9 (2,2)	T, TK, TNZK TVK, TVNZK
LTM 1150-5.1	150	3	400 544	76	50	10 x 6 x 10 10 x 8 x 10	120 163	12,6-56 63*	11,2-28	92 (56)	2,2 (13,5)	74 (54)	0,9 (1,6)	T, TK, TVK
LTM 1220-5.1	220	3	400 544	80	60	10 x 6 x 8 10 x 8 x 8	180 245	13,3-60 67*	12,2-36	103 (60)	2 (20)	88 (56)	1 (4,6)	T, TK, TVK
LTM 1250-6.1	250	3	440 598	76	43	12 x 6 x 10 12 x 8 x 10	180 245	15,5-72	12,2-70	108 (72)	2 (14)	92 (66)	1,1 (3,1)	T, TK, TNZK TF, TN
LTM 1300-6.1	300	3	440 598	76	43	12 x 6 x 10 12 x 8 x 10	180 245	15-60	10,5-70	116 (60)	1,7 (30,5)	92 (58)	1,1 (5,4)	T, TK, TF TN, TA, TAK TAF, TAN
LTM 1400-7.1	400	3	440 598	80	39	14 x 6 x 14 14 x 8 x 14	240 326	15,4-60	7-84	130 (60)	7,1 (63)	100 (58)	1,5 (8,7)	T, TF, TN TY, TYF, TYN
LTM 1500-8.1	500	3	440 598	77	31	16 x 8 x 12	240 326	16,1-84	14-91	145 (84)	4,2 (20,9)	108 (74)	1,9 (2,6)	T, TF, TVF, TN TVN, TY, TYF TVYF, TYN, TVYN
LTM 1800	800	3	440 598	73	31	16 x 8 x 12	300 408	19,3-60	14-91	146 (60)	8 (107)	126 (54)	4,4 (43)	T, TF, TN TAN, TD, TDB TDN, TDNB
LG 1550	550	4,5	440 598	73	31	16 x 8 x 12	300 408	[21-105]	21-91	180 [105]	28 [55]	124 [92]	2,3 [4,4]	L, LD, LDB, LN SL, SLD, SLDB SLN, SD, SDB, SDWB
LG 1750	750	7	440 598	80	33	16 x 8 x 16	400 544	[21-140]	28-105	191 [140]	20 [105]	136 [124]	7,7 [16,6]	S, W, F, V D, B

Auslegersysteme

Boom/jib system, Types de flèche

Teleskopausleger Telescopic boom Flèche télescopique	T	
Verlängerter Teleskopausleger Boom extension Télescope rallongé	V	
Klappspitze / hydraulisch verstellbar Folding jib / hydraulically variable Fléchette pliante / à variation hydraulique	K/ NZK	
Feste Gitterspitze Lattice fly jib Fléchette treillis fixe	F	
Wippbare Gitterspitze Luffing lattice jib Fléchette treillis relevable	N	
Teleskopausleger abgespannt Guyed telescopic boom Flèche télescopique haubanée	A Y	
Hauptausleger Main boom Flèche principale	leicht small légère	L
	schwer heavy lourde	S
Wippbare Gitterspitze Luffing jib Fléchette relevable	leicht small légère	N
	schwer heavy lourde	W
Derrickausleger Derrick boom Derrick	D	
Schwebeballast Suspended counterweight Lest suspendu	B	



Anmerkungen

- LTM = Liebherr-Teleskop-Mobilkran in Straßen-/Geländeausführung
 * Auslegerverlängerung mit Gitterzwischenstücken
 LG = Liebherr-Gittermast-Mobilkran
 • Traglasten entsprechend DIN/ISO
 • LTM-Krane mit 45/60 t auch als Feuerwehrrane
 • Angaben in () gelten für den Teleskopausleger
 • Angaben in [] gelten für den Gittermastausleger

Remarks



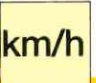



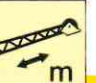



- LTM = Liebherr all terrain crane
 * Telescopic boom extension with lattice sections
 LG = Liebherr mobile crane with lattice boom
 • Lifting capacities acc. to DIN/ISO
 • LTM-cranes with 45/60 t also as fire service cranes
 • Values given in brackets () are valid for telescopic boom
 • Values given in brackets [] are valid for lattice boom

Remarques

- LTM = Liebherr grue mobile routière et tout terrain
 * Rallonge flèche télescopique avec des éléments en treillis
 LG = Liebherr grue mobile avec flèche en treillis
 • Forces de levage selon DIN/ISO
 • Grues mobiles de type LTM avec 45/60 t aussi comme grues pour sapeurs-pompiers
 • Les valeurs entre parenthèses () sont valables pour flèche télescopique
 • Les valeurs entre parenthèses [] sont valables pour flèche en treillis


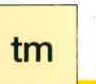

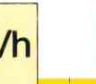

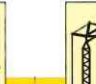

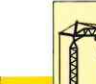


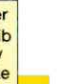
Kompaktkran • Compact mobile crane • Grue mobile compacte



	 max		 kW/PS	 km/h	 %	 Stand./Option	 m	 m	 m		 m		 Ausleger Boom/Jib Flèche/ Flèche
	t	m							max	max	min	max	
LTC 1055-3.1	55	2,5	338 460	75	50	6 x 6 x 6	7,9 - 36	4,5 - 15	50 (36)	2,4 (10,7)	46 (32)	0,7 (2,1)	T, TK, TNZK

Mobilbaukrane • Mobile construction cranes • Grues mobiles de construction



	 max		 tm	 kW/PS	 km/h	 %	 Stand./Option	 m	 m	 m		 m		 Ausleger Boom/Jib Flèche/ Flèche
	t	m								max	max	max	min	
MK 80	8	10	93,24	270 367	80	60	8 x 6 x 8	3,5 - 42	3,5 - 36,6	28	8	48	1,7	TA
MK 100	8	16	112	338 460	75	60	10 x 6 x 10	3,5 - 52	3,5 - 45	33	8	58	1,6	TA

Raupenkrane • Crawler track cranes • Grues sur chenilles

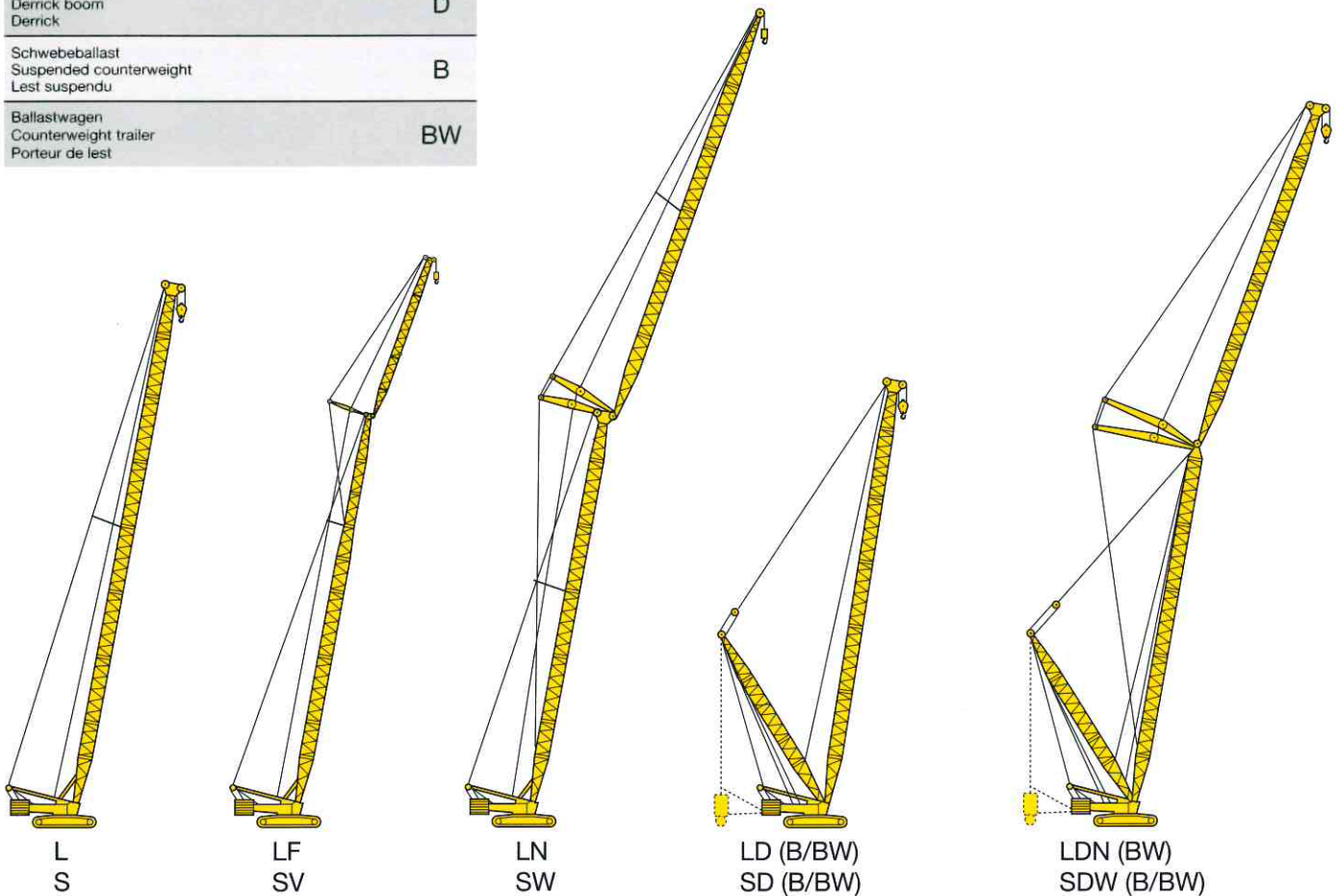
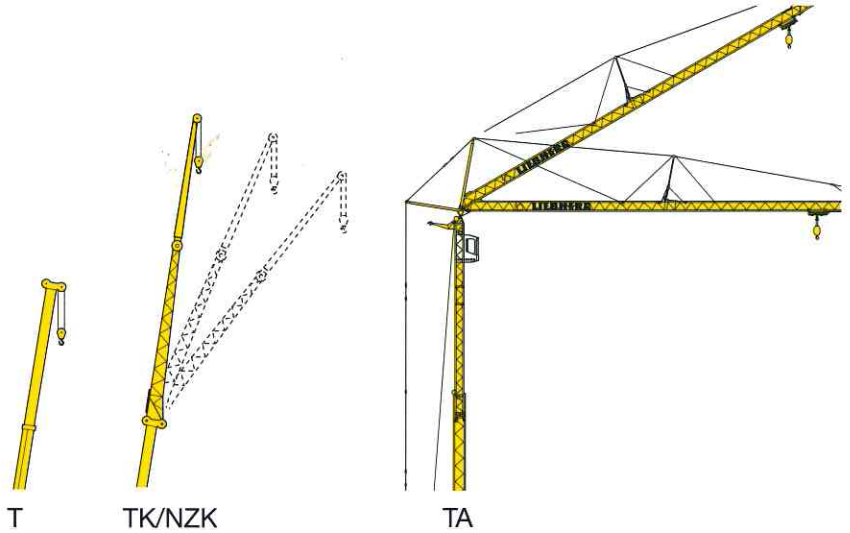


	 max		 tm	 kW/PS	 m	 m	 m		 m		 Ausleger Boom/Jib Flèche/ Flèche
	t	m					max	max	max	t	
LR 1350/1	350	6	4048	270 367	18 - 120	24 - 90	150 (118)	17,5 (50)	100 (104)	2,8 (10)	L, S, W, F, D, B, BW
LR 1400/2	400	4,5	5248	300 408	21 - 119	21 - 91	162 (116)	18,2 (68)	120 (104)	12,8 (21,5)	L, S, N, W, F, D, B, BW
LR 1750	750	7	9640	400 544	21 - 140	28 - 105	191 (137,5)	20 (105)	136 (124)	7,7 (16,6)	S, W, F, V, D, B, BW
LR 1800	800	12	13770	605 823	21 - 126	21 - 91	180 (123)	90 (259)	124 (104)	27 (50)	L, S, W, V, D, B, BW
LR 11200	1200	12	20904	746 1014	42 - 126	42 - 112	226 (120)	50 (400)	164 (112)	20 (60)	S, N, D, BW

Auslegersysteme

Boom/jib system, Types de flèche

Teleskopausleger Telescopic boom Flèche télescopique		T
Klappspitze / hydraulisch verstellbar Folding jib / hydraulically variable Fléchette pliante / à variation hydraulique	K/ NZK	
Teleskopturm mit wipbarem Ausleger Telescopic tower with luffing jib Mât télescopique avec flèche treillis relevable		TA
Hauptausleger Main boom Flèche principale	leicht small légère	L
	schwer heavy lourde	S
Feste Gitterspitze Fixed jib Fléchette treillis fixe	leicht small légère	F
	schwer heavy lourde	V
Wipbare Gitterspitze Luffing jib Fléchette relevable	leicht small légère	N
	schwer heavy lourde	W
Derrickausleger Derrick boom Derrick		D
Schwebeballast Suspended counterweight Lest suspendu		B
Ballastwagen Counterweight trailer Porteur de lest		BW



Anmerkungen

- LTC = Liebherr-Kompaktkran
 • Angaben in () gelten für den Teleskopausleger
 MK = Mobilbaukran
 LR = Liebherr-Raupenkran
 • Traglasten entsprechend DIN/ISO
 • Angaben in () gelten für den L/S-Ausleger mit Derrickeinrichtung

Remarks

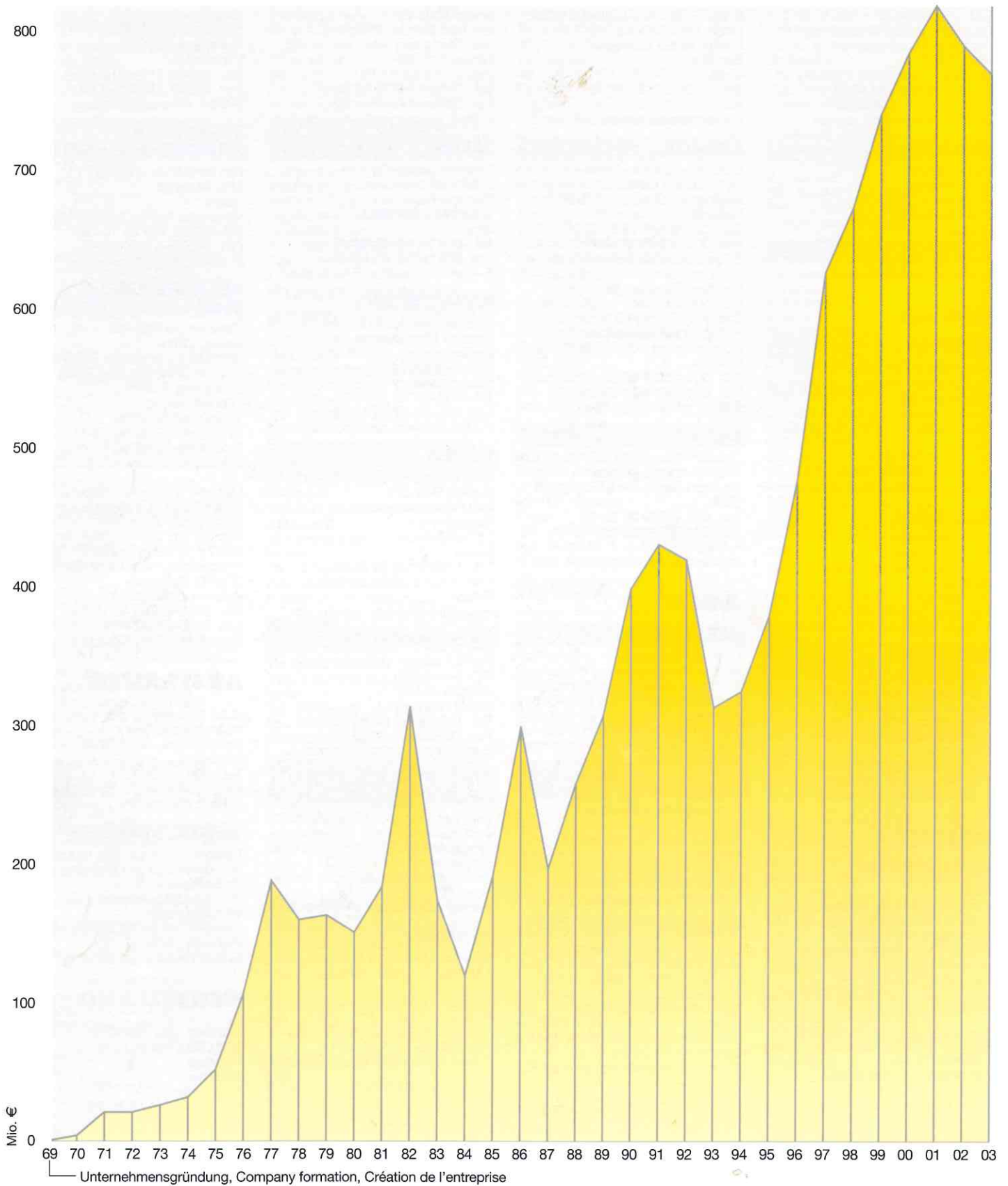
- LTC = Liebherr Compact mobile crane
 • Values given in brackets () are valid for telescopic boom
 MK = Mobile construction crane
 LR = Liebherr crawler crane
 • Lifting capacities acc. to DIN/ISO
 • Values given in brackets are valid for L/S-boom with derrick equipment

Remarques

- LTC = Grue mobile compacte
 • Les valeurs entre parenthèses () sont valables pour flèche télescopique
 MK = Grue mobile de construction
 LR = Liebherr grue sur chenilles
 • Forces de levage selon DIN/ISO
 • Les valeurs entre parenthèses sont valables pour flèche L/S-principale avec derrick

Umsatzentwicklung

Turnover trends, Evolution du chiffre d'affaires



Änderungen vorbehalten. / Subject to modification. / Sous réserve de modifications.

DEF06.2004

Liebherr-Werk Ebingen GmbH

Postfach 1361, D-89582 Ebingen

☎ +49 73 91 5 02-0, Fax +49 73 91 5 02-33 99

www.liebherr.com, E-mail: info.lwe@liebherr.com