

**Die Fahrzeugkrane.  
Mobile and Crawler Cranes.  
Grues mobiles  
et sur chenilles.**

**'97**



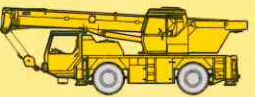







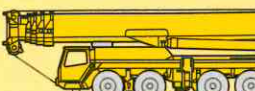
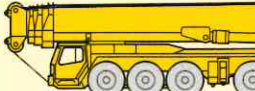
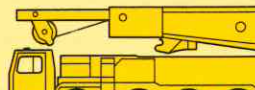
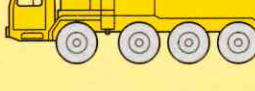
**LIEBHERR**



# Die Mobilkrane.

## Mobile cranes.

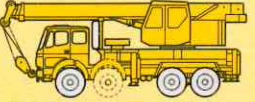
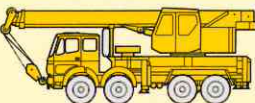
### Grues mobiles routière et tout terrain.

Image	Model	max		tm	kW/PS	km/h	Stand./Option	max.	kW/PS	min./max.		min./max.		max. m		max. t	Ausleger Boom/Jib Flèche/ Flechette
		t	m							m	m	m	m				
	LTM 1030/2	35	3	105	205 278	80	4 x 4 x 4	60	-	9,2 - 30	8,6 - 15	45 (30)	2,8 (8,3)	40 (26)	0,5 (1,4)	T, TK	
	LTM 1040/1	40	3	160	230 312	76	6 x 4 x 6 6 x 6 x 6	55	-	9,5 - 30	8,1 - 14,5	45 (31)	2,7 (9,3)	40 (26)	0,7 (2,1)	T, TK	
	LTM 1050/1	50	3	176,4	230 312	76	6 x 4 x 6 6 x 6 x 6	55	-	10,5 - 40	9,6 - 16	56 (41)	1,8 (7,6)	42 (34)	1 (0,8)	T, TK	
	LTM 1070/1	70	3	222	300 408	73	8 x 6 x 8 8 x 8 x 8	60	120 163	10,6 - 40	8,4 - 15,8	56 (41)	3,5 (11)	46 (34)	0,8 (1,9)	T, TK	
	LTM 1090/2	90	3	325	300 408	73	8 x 6 x 8 8 x 8 x 8	60	120 163	11,7 - 52	10,8 - 19	70 (52)	2,6 (10,2)	56 (44)	0,9 (1,2)	T, TK	
	LTM 1120/1	120	3	438	400 544	76	10 x 6 x 10 10 x 8 x 10	50	120 163	12,6 - 56	11,2 - 28	84 (56)	1,5 (12,6)	64 (54)	0,9 (1,2)	T, TK	
	LTM 1160/2	160	3	588	400 544	76	10 x 6 x 10 10 x 8 x 10	50	149 203	13,2 - 60	12,2 - 36	96 (60)	2,2 (14)	70 (54)	1 (2,9)	T, TK	
	LTM 1225	225	2,5	770	400 544	76	12 x 6 x 10 12 x 8 x 10	40	182 247	15,1 - 60	14 - 63	102 (60)	2,8 (18)	88 (54)	1,1 (5,4)	T, TK, TKS, TF, TN, TA, TAKS, TAF, TAN	
	LTM 1300	300	3	1200	420 570	71	14 x 8 x 10	34	224 305	15,5 - 60	10,5 - 70	114 (60)	2,3 (33)	84 (56)	1,2 (9,1)	T, TF, TN, TA, TAF, TAN	
	LTM 1400	400	3	1530	420 570	71	16 x 8 x 12	31	240 326	15,7 - 50	12 - 84	132 (50)	2 (80)	100 (46)	3,7 (17,5)	T, TF, TN, TA, TAF, TAN	
	LTM 1800	800	3	4186	420 570	72	16 x 8 x 12	31	300 408	19,3 - 60	14 - 91	146 (60)	6,9 (107)	108 (54)	4,4 (21)	T, TF, TN, TAN, TD, TDB	
	LG 1550	550	4,5	5256	420 570	67	16 x 8 x 12	34	300 408	21 - 105	21 - 91	165 (105)	15,4 (55)	124 (92)	2,3 (4,4)	L, LD, LDB, LN, SL, SLD, SLDB, SLN, SD, SDB, SDWB	

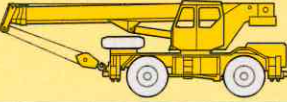
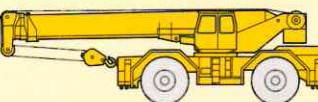
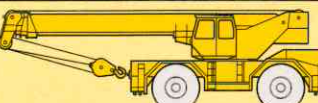
**Die Fahrzeugkrane mit der Spitzentechnik für mehr Nutzen im praktischen Einsatz.**



**Die Autokrane.  
Truck cranes.  
Grues automotrices.**

		max		tm	kW/PS	km/h	min./max.	min./max.	max. m		max. t		Ausleger Boom/Jib Flèche/ Fléchette
		t	m	max.					max. m	max. t			
	LTF 1030 - 3/4	30	2,5	75	100 136	80	8,4 - 26	8,2 - 14,4	42 (27)	2 (9)	36 (24)	0,8 (1,9)	T, TK
	LTF 1040 - 4	40	2	118	100 136	80	9,4 - 30	8,2 - 14,4	45 (31)	2 (7,5)	40 (28)	0,6 (1,8)	T, TK

**Die Geländekrane.  
Rough terrain cranes.  
Grues mobiles tout terrain de chantier.**

		max		tm	kW/PS	km/h	max.	min./max.	min./max.	max. m		max. t		Ausleger Boom/Jib Flèche/ Fléchette
		t	m	max.						max. m	max. t			
	LTL 1030	30	2,5	104,4	100 136	40	60	8,4 - 26	8,2 - 14,4	41 (27)	2,1 (10,3)	30 (24)	0,9 (1,5)	T, TK
	LTL 1050	50	3	196	165 224	31	70	10 - 31	5,1 - 16	48 (32)	3 (12)	40 (28)	1 (2,2)	T, TK
	LTL 1080	80	3	343	188 256	30	50	11 - 34	10	46 (35)	9,5 (19)	40 (30)	2,6 (4,6)	T, TK

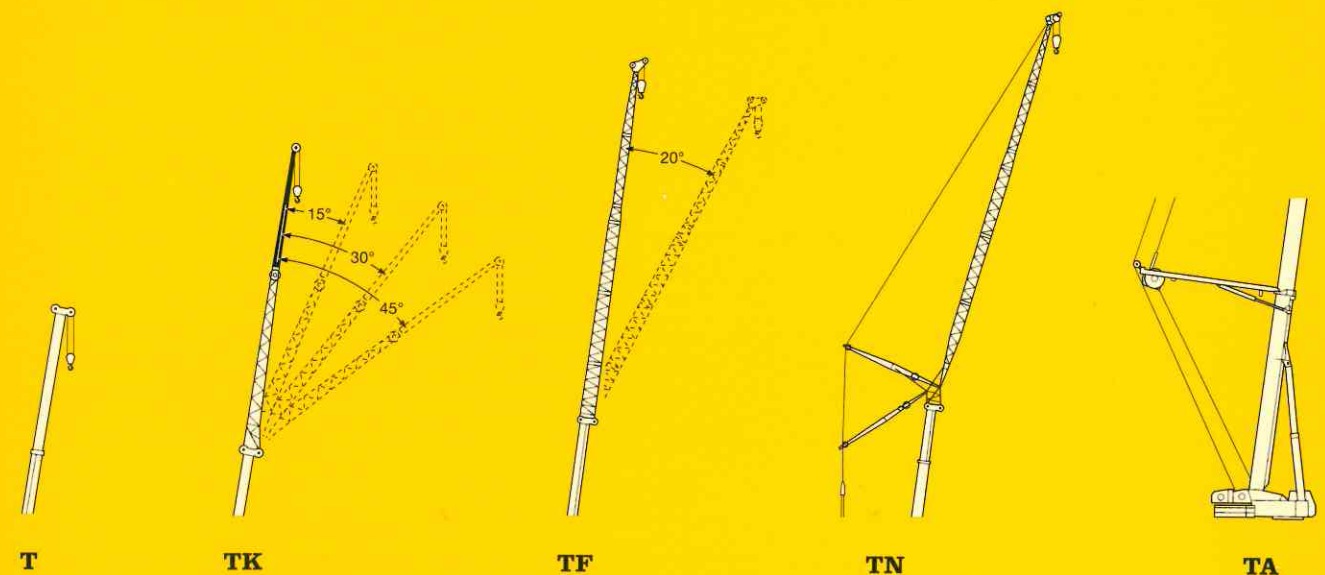
Anmerkungen:  
LTM = Liebherr-Teleskop-Mobilkran in Straßen-/Geländeausführung  
LG = Liebherr-Gittermast-Mobilkran  
LTF = Liebherr-Teleskop-Fertighauskran  
LTL = Liebherr-Teleskop-Mobilkran in Geländeausführung  
● Traglasten entsprechend DIN/ISO  
● max. Lastmoment (tm) entsprechend 85 % Kipplast  
● LTM-Krane mit 30/40 t auch als Feuerwehkrane  
● Angaben in ( ) gelten für den Teleskopausleger

Remarks:  
LTM = Liebherr all terrain crane  
LG = Liebherr mobile crane with lattice boom  
LTF = Liebherr telescopic crane for the erection of prefabricated houses  
LTL = Liebherr rough terrain crane  
● Lifting capacities acc. to DIN/ISO  
● max. load moment (tm) acc. to 85 % tipping load  
● LTM-cranes with 30/40 t also as fire service cranes  
● Values given in brackets are valid for telescopic boom

Remarques:  
LTM = Liebherr grue mobile routière et tout terrain  
LG = Liebherr grue mobile avec flèche en treillis  
LTF = Liebherr grue télescopique pour montage de maisons préfabriquées  
LTL = Liebherr grue mobile tout terrain de chantier  
● Forces de levage selon DIN/ISO  
● Couple de charge maxi. (tm) selon 85 % de la charge de basculement  
● Grues mobiles de type LTM avec 30/40 t aussi comme grues pour sapeurs-pompiers  
● Les valeurs entre parenthèses sont valables pour flèche télescopique

**Auslegersysteme  
Boom / jib systems  
Types de flèche**

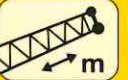
Teleskopausleger Telescopic boom Flèche télescopique	T
Klappspitze Folding jib Fléchette pliante	K
Feste Gitterspitze Lattice fly jib Fléchette treillis fixe	F
Wippbare Gitterspitze Luffing lattice jib Fléchette treillis relevable	N
Teleskopausleger abgespannt Guyed telescopic boom Flèche télescopique haubanée	A



**The outstandingly engineered mobile and crawler cranes for more benefit during practical operation.**



# Die Raupenkrane. Crawler track cranes. Grues sur chenilles.

	 max		 tm	 kW/PS	 min./max.	 min./max.	 max. m		 max. t		 Ausleger Boom/Jib Flèche/ Fléchette	
	t	m					max. m	max. t	max. m	max. t		
 <b>LR</b>	<b>LR 1350/1</b>	350	4,5	4100	300 408	21 - 105	21 - 91	152 (102)	13 (60)	108 (92)	3,2 (21)	L, LL, LD, LDB, LDBW, LN, LDN, LDNB, LDNBW
	<b>LR 1550</b>	550	4,5	5568	300 408	21 - 105	21 - 91	165 (102)	15,4 (120)	124 (92)	2,2 (21)	L, LD, LDB, LN, SL, SLD, SLDB, SLN, SD, SDB, SDW, SDWB
	<b>LR 1650/1</b>	650	6	9000	385 530	21 - 112	21 - 91	180 (108)	17 (120)	124 (96)	6,3 (13,4)	L, LD, LDBW, LN
	<b>LR 1800</b>	800	9	12100	405 551	21 - 112	21 - 91	180 (108)	90 (300)	124 (96)	27 (60)	S, SL, SD, SDB, SDBW, SDW, SDWB, SDWBW
 <b>LTR</b>	<b>LTR 1800</b>	800	3	2670	300 408	18 - 60 <sup>1)</sup>	21 - 91	146 (60) <sup>1)</sup>	6,9 (107)	104 (54) <sup>1)</sup>	2,4 (21)	T, TF, TN, TAN
	<b>LR 11200</b>	1200	12	20904	746 1014	21 - 126	21 - 112	226 (120)	50 (400)	164 (112)	20 (60)	S, SN, SDN, SD, SDBW, SDNBW

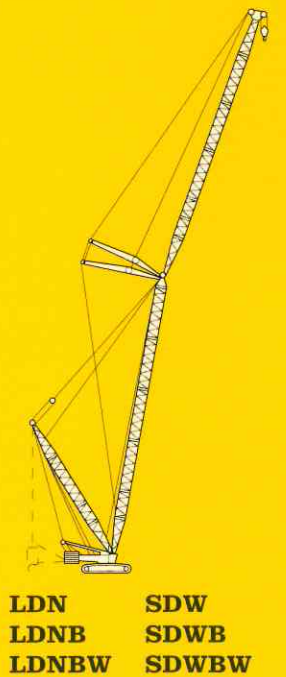
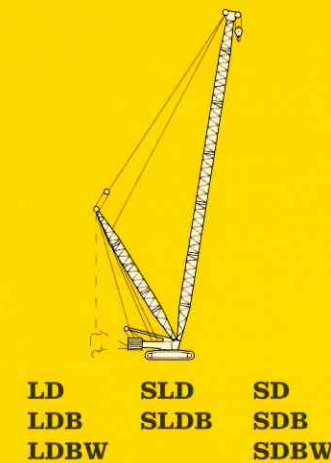
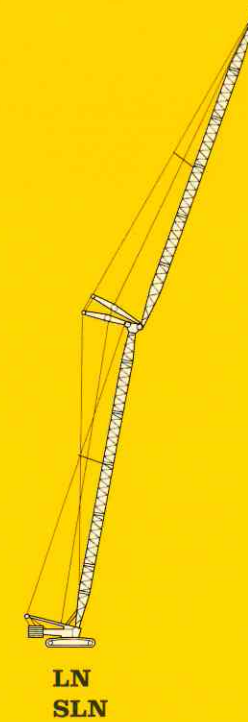
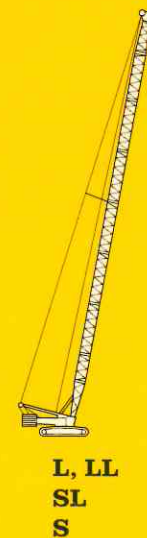
Anmerkungen:  
LR = Liebherr-Raupenkrane  
LTR = Liebherr-Teleskop-Raupenkrane  
● Traglasten entsprechend DIN/ISO  
● max. Lastmoment (tm) mit Derrickeinrichtung  
● Angaben in ( ) gelten für den L/S-Ausleger mit Derrickeinrichtung  
<sup>1)</sup> Teleskopausleger

Remarks:  
LR = Liebherr crawler crane  
LTR = Liebherr telescopic crawler crane  
● Lifting capacities acc. to DIN/ISO  
● max. load moment (tm) with derrick boom  
● Values given in brackets are valid for L/S-boom with derrick equipment  
<sup>1)</sup> Telescopic boom

Remarques:  
LR = Liebherr grue sur chenilles  
LTR = Liebherr grue à flèche télescopique sur chenilles  
● Forces de levage selon DIN/ISO  
● Couple de charge maxi. (tm) avec derrick  
● Les valeurs entre parenthèses sont valables pour flèche L/S-principale avec derrick  
<sup>1)</sup> Flèche télescopique

## Auslegersysteme Boom / jib systems Types de flèche

Gittermast Lattice boom Flèche principale	leicht small légère	L
	schwer heavy lourde	S
Wippbare Gitterspitze Luffing jib Fléchette relevable	leicht small légère	N
	schwer heavy lourde	W
Derrickmast Derrick boom Derrick		D
Schwebeballast Suspended counterweight Lest suspendu		B
Ballastwagen Counterweight trailer Porteur de lest		W



**Les grues mobiles avec la technique de pointe pour plus de rentabilité.**



# Weltweit Vertriebs- und Servicestellen. Sales and Service Stations world-wide. Etablissements commerciaux et service après-vente mondiaux.

## EUROPA

### D DEUTSCHLAND

Liebherr-Werk Ebingen GmbH  
Postfach 1361  
89582 Ebingen  
Tel. (07391) 502-0  
Telefax (07391) 502-399

Liebherr-Werk Ebingen GmbH  
Autokran-Service  
Dorstener Str. 107  
46145 Oberhausen  
Tel. (0208) 6 90 17-0  
Telefax (0208) 6 90 17-22

Liebherr-Werk Ebingen GmbH  
Kundendienstbereich Ost  
Zielitzstr.  
14822 Alt-Bork  
Tel. (033845) 67-0  
Telefax (033845) 4 11 29

### S SCHWEDEN

ALFAB  
Bastborregatan 11  
S-72134 Västerås  
Tel. 0046-21/12 81 40  
Fax 0046-21/13 40 35

ALFAB SERVICE AB  
Bastborregatan 11  
S-72134 Västerås  
Tel. 0046-21/12 81 40  
Fax 0046-21/13 40 35

### FIN FINNLAND

Jouko Tyrkäs  
Rajakyläntie 10 E  
FIN-01280 Vantaa  
Tel. 00358-9/30 74 00  
Fax 00358-9/30 74 10

### DK DÄNEMARK/ NORWEGEN

Ing. Hans P. Oen  
Tekn. Konsulent-Løftteknretninger  
Billingstadlets 3, Postfach 52  
N-1361 Billingstad  
Tel. 0047-66/84 91 17  
Fax 0047-66/98 02 36

### NL NIEDERLANDE

Liebherr-Nederland BV  
Beeldschermweg 2  
NL-3821 AH Amersfoort  
Tel. 0031-33/4 50 02 00  
Fax 0031-33/4 50 02 93

### B BELGIEN

N.V. van der Spek S.A.  
Industrielaan 10  
B-1740 Ternat  
Tel. 0032-2/5 82 29 79  
Fax 0032-2/5 82 48 28

### F FRANKREICH

Liebherr-France S.A.  
B. P. 287  
2, Avenue Joseph Rey  
F-68005 Colmar-Cedex  
Tel. 0033-389/21 35 04  
Fax 0033-389/21 35 28

Liebherr-France S.A.  
Z. I., B. P. 40  
F-77220 Tournan en Brié  
Tel. 0033-1/64 42 54 30  
Fax 0033-1/64 25 46 08

Liebherr-France S.A.  
1, Impasse de Grèce  
ZAC de l'Anjoly  
F-13127 Vitrolles  
Tel. 0033-442/15 95 95  
Fax 0033-442/79 13 89

### GB GROSSBRITANNIEN

Liebherr-Great Britain Ltd.  
Travellers Lane, Welham Green  
GB-Hatfield/Herts. AL9 7HW  
Tel. 0044-1707/26 81 61  
Fax 0044-1707/26 16 95

### IRL IRLAND

Liebherr (Ireland) Ltd.  
IRL-Killarney, Co. Kerry  
Tel. 00353-64/3 15 11  
Fax 00353-64/3 27 35

### A ÖSTERREICH

Liebherr-Werk Bischofshofen  
Ges.mBH  
Postfach 88  
A-5500 Bischofshofen  
Tel. 0043-6462/25 61-257  
Fax 0043-6462/25 61-287

Liebherr-Werk Bischofshofen  
Ges.mBH  
Werksniederlassung Wien  
Oberlaaerstr.  
A-1232 Wien  
Tel. 0043-1/6 10 18  
Fax 0043-1/6 10 18-35

### CH SCHWEIZ

Liebherr-Baummaschinen AG  
Industrieweg 31  
CH-4852 Rothrist  
Tel. 0041-62/7 85 81 11  
Fax 0041-62/7 85 82 80

### E SPANIEN/PORTUGAL

Liebherr-Iberica, S.A.  
Ctra. N-II, Km. 41, Parcela 7  
Pol. Miralcampo  
E-19200 Azuqueca de Henares  
Tel. 0034-49/26 44 00  
Fax 0034-49/26 43 76/82/92

### I ITALIEN

Liebherr Italia S.p.A.  
Via degli Schiavetti, 11  
I-34074 Monfalcone (Go)  
Tel. 0039-481/71 09 01  
Fax 0039-481/48 02 00

### GR GRIECHENLAND

Tsekouras S.A.  
81 - 83 Iera Odos Str.  
GR-11855 Athen  
Tel. 0030-1/3 47 40 00  
Fax 0030-1/3 46 21 98

### TR TÜRKEI

HCS Makina Müessesilik ve  
Ticaret A.S.  
Nispetiye Caddesi 47/Etiler  
TR-80630 Istanbul  
Tel. 0090-212/2 57 38 61  
Fax 0090-212/2 57 12 59

### PL POLEN

MB Import-Export Sp.z.o.o.  
mgr inż. Marcel Bednarek  
ul. Rózyckiego 36  
PL-40-589 Katowice  
Tel./Fax 0048-32/51 52 09

### CZ TSCHIECHIEN

O.K.L. Klas Pavel  
Lišovicák 929/1  
CZ-148 00 Praha 4 - Kunratice  
Tel. 00420-2/8 44 64 56  
Fax 00420-2/6 43 67 30

Firma Kilmex  
Servis Liebherr  
Palackého Ul.  
CZ-27746 Veltrusy  
Tel. 00420-205 / 2 43 10  
Fax 00420-205 / 2 43 10

### SK SLOWAKEI

DUVOKS S.R.O.  
Dolne Rudiny  
01001 Zilina  
Slowakei  
Tel. 00421/89/4 56 71  
Fax 00421/89/3 30 21

### HR KROATIEN

Zoran Reif  
Kliška 5  
HR-10000 Zagreb  
Tel. 00385-1/48 46 64 39  
Fax 00385-1/4 84 64 41

### SI SLOWENIEN

ADK d.o.o.  
Jaskova Ulica 18  
SI-62000 Maribor  
Tel. 00386-62/41 31 97  
Fax 00386-62/41 31 59

### YU REPUBLIK JUGOSLAWIEN MONTENEGRO

NID TRADE  
Dusan Obradovic  
Splitska 2  
YU-11050 Beograd  
Tel./Fax 00381-11/4 89 30 60

### BA BOSNIEN-HERZEGOWINA

Centrotans Transit  
Stup Bacići bb  
Dz. Bijedica 138  
BA-Sarajevo  
Tel. 00387-71/46 71 19  
Fax 00387-71/54 41 38

### H UNGARN

POINTED KIT.  
Fogarasi-ut. 197  
H-1141 Budapest  
Tel. + Fax 0036-1/3 83 09 99

### BG BULGARIEN

INTECO - 333  
Sveta Gora 15  
BG-1421 Sofia  
Tel. 00359-2/65 71 53  
Fax 00359-2/66 78 38

### RS RUSSLAND

Liebherr-Holding GmbH  
Firmenvertretung Moskau  
Mamonovskij Per. 6, Raum 10  
SU-103001 Moskau  
Tel. 007-095/2 09 66 79  
Fax 007-095/2 00 02 35

## AMERIKA

### USA

Schiller International Corp.  
101 Eaton St. Suite 300  
USA-Hampton, Virginia 23669  
Tel. 001-757/7 27 07 00  
Fax 001-757/7 27 09 93

Schiller Service Corp.  
1001 Thomas Street  
USA-Hampton, Virginia 23669  
Tel. 001-757/7 27 08 94  
Fax 001-757/7 27 69 82

### KANADA

Liebherr-Canada Ltd.  
1015 Sutton Drive  
Burlington, Ontario L7L 5Z8  
Tel. 001-905/3 19 92 22  
Fax 001-905/3 19 66 22

### ARGENTINIEN

IDESA  
Avda. del Libertador 774  
P 12 Of. C  
RA-1001 Buenos Aires  
Tel. 0054-1/815-00 30/74 09  
Fax 0054-1/815-74 05

### BRASILIEN

Liebherr-Brasil Ltda.  
Rod. Pres. Dutra, km 59  
P 12 Of. C  
CAIXA postal 204  
BR-12 500 Guaratinguetá SP  
Tel. 0055-125/32 42 33  
Fax 0055-125/32 43 66

## AFRIKA

### ÄGYPTEN

DIMATRA International Co.  
11, Rashdan St.  
Mesaha Sq. Dokki  
ET-Kairo  
Tel. 0020-2/3 48 70 71  
Fax 0020-2/3 48 78 82

### ALGERIEN

Liebherr-Export Alger  
19 Lot. Souami  
16330 Birkhadem / Alger  
Algerie  
Tel. 00213-2/55 33 38  
Fax 00213-2/55 33 39

### SÜDAFRIKA

Liebherr-Africa (Pty.) Ltd.  
P.O. Box 841  
Springs/Transvaal 1560  
Südafrika  
Tel. 0027-11/8 17 38 73  
Fax 0027-11/8 17 38 84

## ASIEN

### SAUDI ARABIEN

Saudi Liebherr Company Ltd.  
Medina Road km 9  
P.O. Box 6403  
SJ-Jeddah 21442  
Tel. 00966-2/6 82 53 33  
Fax 00966-2/6 83 48 01

### IRAN

Boron Marz Co.  
248, Mirdamad Ave.  
Teheran 15189  
Islamic Republic of Iran  
Tel. 0098-21/2 27 01 59  
Fax 0098-21/2 27 13 18  
Tlx 088 215451

### OMAN

Oriental International Co.  
P.O. Box 666  
C.P.O. Muscat  
P.C. 111  
Sultanate of Oman  
Tel. 00968/62 65 57  
Fax 00968/62 62 86

### JAPAN

Liebherr Japan Co. Ltd.  
5 - 39, Dalkoku-cho  
Tsrumi-Ku  
Yokohama 230  
Japan  
Tel. 0081-45/5 05 86 87  
Fax 0081-45/5 05 86 83

### VOLKSREPUBLIK CHINA

Liebherr Service AG  
China Representative Office  
Peking Hotel, Room No. 1709  
CN-Peking  
Tel. 0086-10/5 23 23 75  
Fax 0086-10/5 13 23 45

Shanghai Liebherr Machinery  
Equipment Co., Ltd.  
No. 1118 Kui Zhao Road  
200434 Shanghai  
P.R.C.  
Tel. 0086-21/56 03 23 75  
Fax 0086-21/56 03 04 08

### SINGAPUR/MALAYSIA/BRUNEI/ THAILAND/INDONESIEN

Liebherr-Singapore Pte. Ltd.  
8 Pandan Avenue  
Singapore 609384  
Tel. 0065/2 65 23 05  
Fax 0065/2 64 60 73

### KOREA

Dong Kun Industries Co. Ltd.  
Room No. 305, Boam Building  
528, Shinsa Dong,  
Kangnam-Ku  
Seoul/Korea  
Tel. 0082-2/5 16 76 24  
Fax 0082-2/5 16 69 94

### TAIWAN

Leading Prosperous Co., Ltd.  
24, Alley 1, Lane 768  
Pa-Teh Road, Sec. 4  
Taipei  
Taiwan, R.O.C.  
Tel. 00886-2/7 88 91 33  
Fax 00886-2/7 86 82 33

Set Equipment Int. Ltd.  
6/F, No. 348, Cheng Teh Rd.  
Sec. 7, Peitou 112  
Taipei  
Taiwan, R.O.C.  
Tel. 00886-2/8 26 51 81  
Fax 00886-2/8 26 55 00

## AUSTRALIEN

G. M. Baden Pty. Ltd.  
43 Holbeche Road  
Arndell Park, NSW 2148  
Australien  
Tel. 0061-2/6 72 15 51  
Fax 0061-2/6 72 15 46

Änderungen vorbehalten. / Subject to modification. / Sous réserve de modifications.

TP 15/33. 4.97

**Nehmen Sie Kontakt auf mit**

**Please contact**

**Veillez prendre contact avec**

**LIEBHERR-WERK EHINGEN GMBH**

**D-89582 Ebingen/Donau, Telefon (0 73 91) 5 02-0, Telefax (0 73 91) 5 02-3 99**