

LT 1400

Max. Load moment: 1568 mt
 Load charges at heavy duty boom:
 Boom lengths 19 to 60 m
 crane supported on its outriggers
 supporting basis 12 x 12 m
 counterweight 100 t

radius m	19 m 75 %	32,7 m 75 %	46,3 m 75 %	60 m 75 %
3,5	400			
4	352			
4,5	315			
5	284	200		
6	238	173		
7	207	153		
8	182	137	130	
9	165	124	116	
10	150	115	108	
12	127	100	93	80
14	111	88	83	72
16	98	78	74	65
18		69	67	60
20		62	60	55
22		57	55	50
24		52	49	46
26		46	45	43
28			41	39
30			37	37
32			34	34
34			31	31
36			29	29
38			26	26
40				24
42				21
44				19
46				18
48				16
50				14

Stability 75% according to DIN-Standards 15019/2
 Solidity values according to DIN-Standards 15018/3

Ehingen, den 24.5.1982

Handwritten signature

(only for static pre-calculations)

LT 1400

Load charges at luffing jib in t. Heavy duty boom lengths 32,7 m to 60 m, luffing jib boom lengths 28 m to 63 m, crane on outriggers, 360°, counterweight 100 t.

The radius resulting with load has to be considered.

m	32,7 m					46,3 m					60,0 m								
	28 m	35 m	42 m	49 m	56 m	63 m	28 m	35 m	42 m	49 m	56 m	63 m	28 m	35 m	42 m	49 m	56 m	63 m	
16	75						70												
20	65	52					62	50					50						
24	60	50	40				58	48	38				45	40					
28	48	48	38	35	26		45	45	35	30	24		42	37	32				
32	40	40	35	33	24	22	36	40	32	28	22	20	35	35	30	26	22		
36		30	30	30	22	20		30	30	27	21	19	30	30	29	24	21	17	
40			28	26	21	19		27	26	25	20	18	26	26	26	23	20	16	
44				22	20	18			22	22	19	17	22	22	22	22	19	15	
48				18	18	17				18	18	16			20	18	18	14	
52					16	16				17	16	15				17	16	13	
56					15	15					14	14				14	14	12	
60					14	14					12	13					12	11	
64						13											10	10	
68																		9	

Stability 75% according to DIN-Standards 15019/2.

Weight of hookblock is contained in load charges.

Ehingen, den 24.5.1982

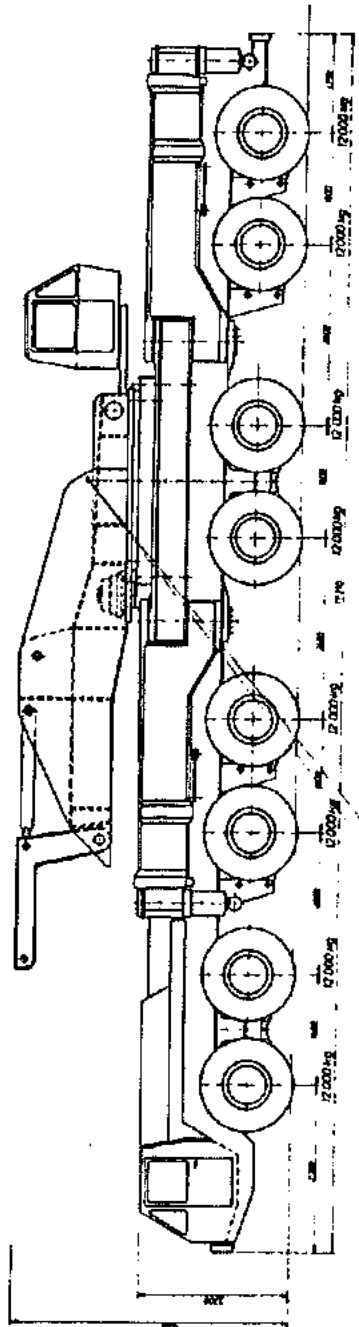
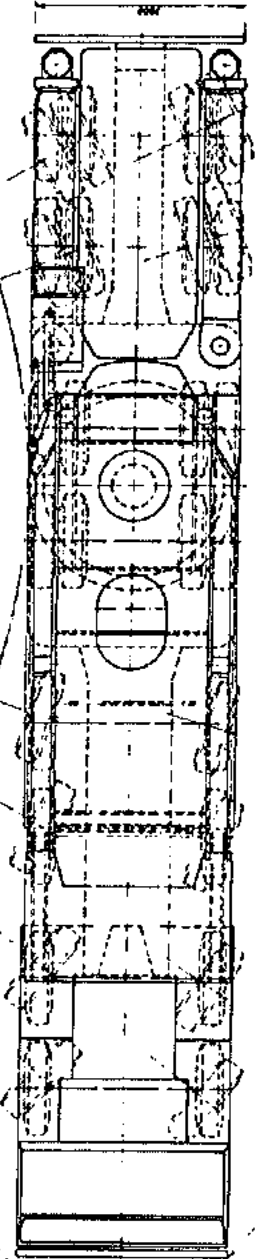


Figure 3



1. Name of the drawing: Автомобиль LT 1100 2. Drawing No.: 25 3. Date: 1968 4. Scale: 1:1 5. Drawing No.: А0 6. Drawing No.: 1 7. Drawing No.: 1 8. Drawing No.: 1 9. Drawing No.: 1 10. Drawing No.: 1 11. Drawing No.: 1 12. Drawing No.: 1 13. Drawing No.: 1 14. Drawing No.: 1 15. Drawing No.: 1 16. Drawing No.: 1 17. Drawing No.: 1 18. Drawing No.: 1 19. Drawing No.: 1 20. Drawing No.: 1 21. Drawing No.: 1 22. Drawing No.: 1 23. Drawing No.: 1 24. Drawing No.: 1 25. Drawing No.: 1 26. Drawing No.: 1 27. Drawing No.: 1 28. Drawing No.: 1 29. Drawing No.: 1 30. Drawing No.: 1 31. Drawing No.: 1 32. Drawing No.: 1 33. Drawing No.: 1 34. Drawing No.: 1 35. Drawing No.: 1 36. Drawing No.: 1 37. Drawing No.: 1 38. Drawing No.: 1 39. Drawing No.: 1 40. Drawing No.: 1 41. Drawing No.: 1 42. Drawing No.: 1 43. Drawing No.: 1 44. Drawing No.: 1 45. Drawing No.: 1 46. Drawing No.: 1 47. Drawing No.: 1 48. Drawing No.: 1 49. Drawing No.: 1 50. Drawing No.: 1 51. Drawing No.: 1 52. Drawing No.: 1 53. Drawing No.: 1 54. Drawing No.: 1 55. Drawing No.: 1 56. Drawing No.: 1 57. Drawing No.: 1 58. Drawing No.: 1 59. Drawing No.: 1 60. Drawing No.: 1 61. Drawing No.: 1 62. Drawing No.: 1 63. Drawing No.: 1 64. Drawing No.: 1 65. Drawing No.: 1 66. Drawing No.: 1 67. Drawing No.: 1 68. Drawing No.: 1 69. Drawing No.: 1 70. Drawing No.: 1 71. Drawing No.: 1 72. Drawing No.: 1 73. Drawing No.: 1 74. Drawing No.: 1 75. Drawing No.: 1 76. Drawing No.: 1 77. Drawing No.: 1 78. Drawing No.: 1 79. Drawing No.: 1 80. Drawing No.: 1 81. Drawing No.: 1 82. Drawing No.: 1 83. Drawing No.: 1 84. Drawing No.: 1 85. Drawing No.: 1 86. Drawing No.: 1 87. Drawing No.: 1 88. Drawing No.: 1 89. Drawing No.: 1 90. Drawing No.: 1 91. Drawing No.: 1 92. Drawing No.: 1 93. Drawing No.: 1 94. Drawing No.: 1 95. Drawing No.: 1 96. Drawing No.: 1 97. Drawing No.: 1 98. Drawing No.: 1 99. Drawing No.: 1 100. Drawing No.: 1		1. Name of the drawing: Автомобиль LT 1100 2. Drawing No.: 25 3. Date: 1968 4. Scale: 1:1 5. Drawing No.: А0 6. Drawing No.: 1 7. Drawing No.: 1 8. Drawing No.: 1 9. Drawing No.: 1 10. Drawing No.: 1 11. Drawing No.: 1 12. Drawing No.: 1 13. Drawing No.: 1 14. Drawing No.: 1 15. Drawing No.: 1 16. Drawing No.: 1 17. Drawing No.: 1 18. Drawing No.: 1 19. Drawing No.: 1 20. Drawing No.: 1 21. Drawing No.: 1 22. Drawing No.: 1 23. Drawing No.: 1 24. Drawing No.: 1 25. Drawing No.: 1 26. Drawing No.: 1 27. Drawing No.: 1 28. Drawing No.: 1 29. Drawing No.: 1 30. Drawing No.: 1 31. Drawing No.: 1 32. Drawing No.: 1 33. Drawing No.: 1 34. Drawing No.: 1 35. Drawing No.: 1 36. Drawing No.: 1 37. Drawing No.: 1 38. Drawing No.: 1 39. Drawing No.: 1 40. Drawing No.: 1 41. Drawing No.: 1 42. Drawing No.: 1 43. Drawing No.: 1 44. Drawing No.: 1 45. Drawing No.: 1 46. Drawing No.: 1 47. Drawing No.: 1 48. Drawing No.: 1 49. Drawing No.: 1 50. Drawing No.: 1 51. Drawing No.: 1 52. Drawing No.: 1 53. Drawing No.: 1 54. Drawing No.: 1 55. Drawing No.: 1 56. Drawing No.: 1 57. Drawing No.: 1 58. Drawing No.: 1 59. Drawing No.: 1 60. Drawing No.: 1 61. Drawing No.: 1 62. Drawing No.: 1 63. Drawing No.: 1 64. Drawing No.: 1 65. Drawing No.: 1 66. Drawing No.: 1 67. Drawing No.: 1 68. Drawing No.: 1 69. Drawing No.: 1 70. Drawing No.: 1 71. Drawing No.: 1 72. Drawing No.: 1 73. Drawing No.: 1 74. Drawing No.: 1 75. Drawing No.: 1 76. Drawing No.: 1 77. Drawing No.: 1 78. Drawing No.: 1 79. Drawing No.: 1 80. Drawing No.: 1 81. Drawing No.: 1 82. Drawing No.: 1 83. Drawing No.: 1 84. Drawing No.: 1 85. Drawing No.: 1 86. Drawing No.: 1 87. Drawing No.: 1 88. Drawing No.: 1 89. Drawing No.: 1 90. Drawing No.: 1 91. Drawing No.: 1 92. Drawing No.: 1 93. Drawing No.: 1 94. Drawing No.: 1 95. Drawing No.: 1 96. Drawing No.: 1 97. Drawing No.: 1 98. Drawing No.: 1 99. Drawing No.: 1 100. Drawing No.: 1
---	--	---

SKA 29 002

Автомобиль LT 1100

25